



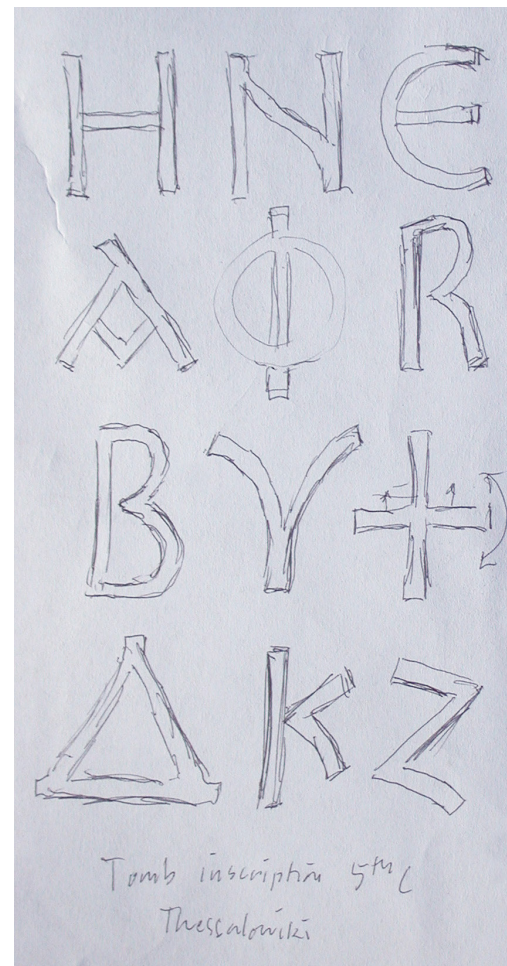
INTRODUCING : **LONIKI** : A NEW DISPLAY FONT INSPIRED BY A TIME OF GREAT CHANGE

YOU CANNOT APPRECIATE
THE FUNCTION OF A TYPEFACE
UNTIL YOU USE IT VERY SMALL...

BUT YOU CANNOT APPRECIATE
ITS BEAUTY
UNTIL YOU SEE IT VERY LARGE.

LONIKI

Loniki is the shorthand name locals call their ancient city of Thessaloniki. As a port city in Macedonia, it has always entertained a mix of influences: north and south, east and west, land people and sea traders. Its enduring success has depended on assimilating those diverse cultures in its people and in its art. In late antiquity, there was a potent mix of early Christian and classical Roman culture from the west, Byzantium from the east, and an increasing presence of Gothic people from the north. In the Archeological Museum in Thessaloniki, on a 5th century tomb, there is an inscription that contains a stunning melding of all these traditions. This rare inscription (unlike any of the others seen there), with its mix of sturdy open D and O, sensual serpentine diagonals to M and N, “ram’s horn” Y, with early medieval round G and broken-bar A, is a graphic recording of life in the midst of social change. That inscription is the basis for the development of Loniki.





Living languages. Loniki includes characters that allow it to be set in 229 modern languages...

... and bring to life several languages that no longer exist in speech but only on the page.

LANGUAGES

LUCIFER

A SYMPATHETIC HISTORY



GARRARD COUNTY
LIBRARY

◀ 1956 ▶



ΟΙ ΙΛΥΠΙΟΙ
THE ILLYANS



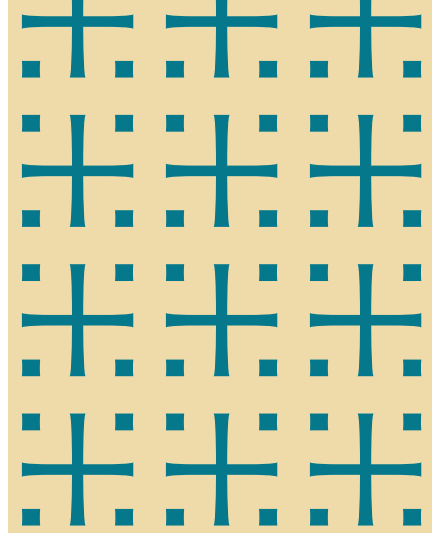
HEATHENS
AT THE GATE!

— OR —

RATIONAL
AS NEWTON

Numerous alternate characters allow you to find just the right expression – are you feeling exquisitely classical or maximum goth today? Either way, Loniki has the look you need. Indeed, Loniki justly takes its place as one of the great titling typefaces.

∞ THE † GOOD ♀ LIFE
IS ⊖ A ☾ LIFE † ROOTED
YIN ⊕ KINDNESS ⊕



MARGINALIA
A NOVEL
REGINA COX



THE
ORIGIN
& DEEDS
OF THE
GOTHS
JORDANES



"JUST Q+"

FRIENDSHIP IS EQUALITY

ΚΟΙΝΑ ΤΑ ΦΙΛΩΝ

Loniki Symbols provides a set of 142 glyphs for social and cultural symbols, vines and ornaments...

...each harmonizing effortlessly with the alpha-numeric and all possessing Loniki's graceful elegance.



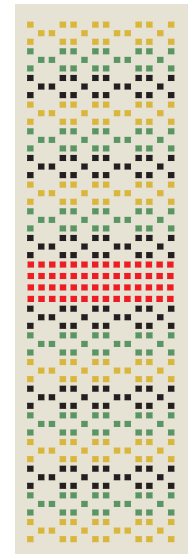
Vines & Ornaments



PILLARS OF PARADISE



SANSTROM COVID19



BAUHAUS
TEXTILES

Vines & Ornaments Loniki Symbols includes ornaments and border elements. Set the tracking and leading values to have them interlock in fascinating ways. The vines stylistically match all of the other letters and glyphs; use them as individual ornaments or combine them into intricate patterns.



Loniki and Loniki Symbols designed by Steven Skaggs. Font development and production by Delve Withrington. Loniki licenses for Desktop, Webfont, and App licenses may be purchased at DelveFonts.com. For additional licensing options such as Enterprise, ePubs, Broadcast, OEM, and more, email: sales@delvefonts.com. Loniki, Tome, Delve Fonts and the Delve Fonts Logo are trademarks of Delve Fonts LLC. Text font is Tome Light. Booklet designed by Steven Skaggs. © 2023 Steven Skaggs